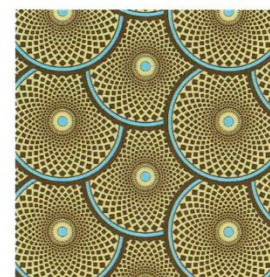
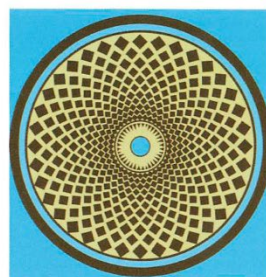
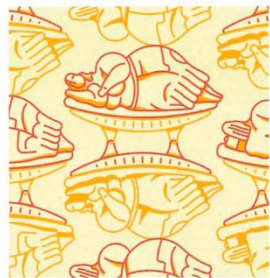
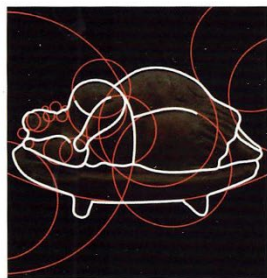
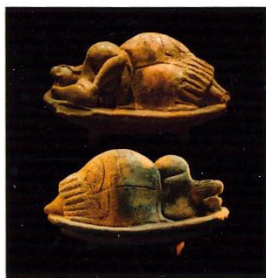
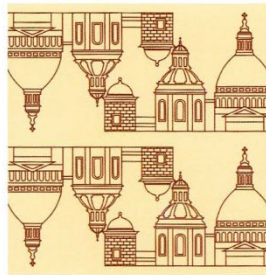
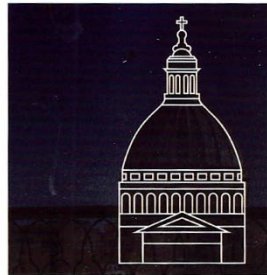
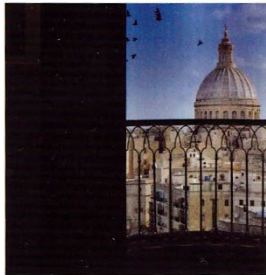
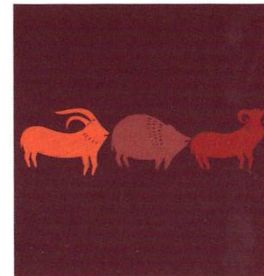
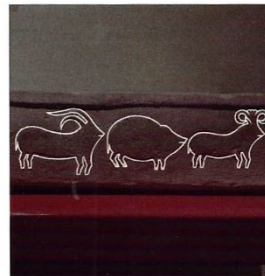
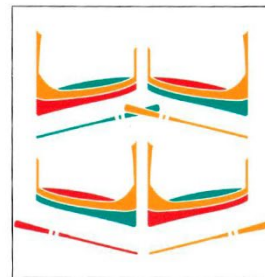
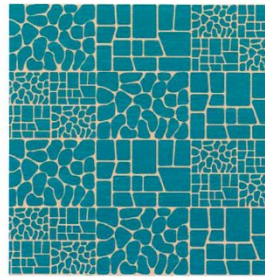
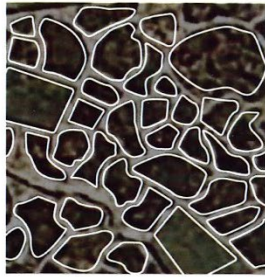
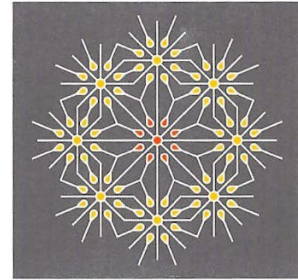
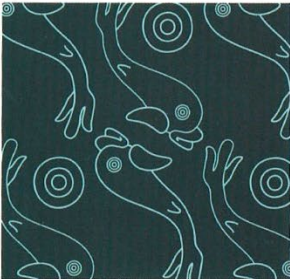
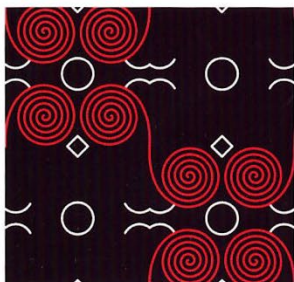
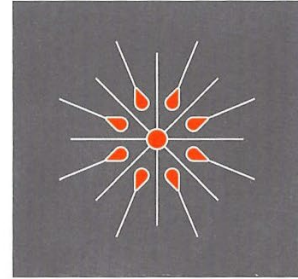
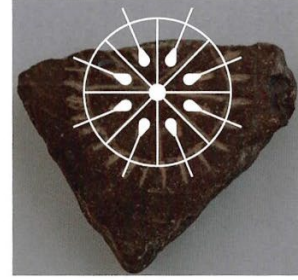


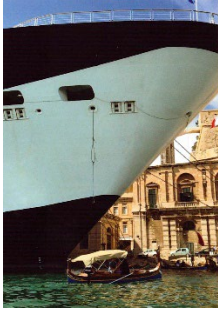
Maltańskie inspiracje











MALTA VALLE

KEEPING TRADITION AFLOAT

IEDforMalta

IED

Malta
Gozo & Comino



Dgħajsa tal-pass



The Silent City.

Mdina, Malta

Mdina is a fortified medieval town enclosed in bastions, located on a large hill in the centre of Malta. The town was the old capital of Malta, and with its narrow streets, few inhabitants and beautiful views over the Island its truly a magical town. Mdina is referred to as the

"Silent City" by Maltese and visitors alike - no cars (except those of a limited number of residents) have permission to enter Mdina and the town provides a relaxing atmosphere among the visitors walking its narrow streets and alleyways.





IEDforMalta





VALLETTA
EUROPEAN
CAPITAL
OF CULTURE
2018

WIDTH
2,64 M

HEIGHT
2,85 M

THE MALTESE
GALLARIJA

IEDforMalta

IED

Malta
Gozo & Comino